



BBD5 Broken Bag Detector

What it Does

- Continuously monitors for filter media leakage.
- Indicates relative condition of bags.
- Acts as a preventative maintenance tool.

Product Description

The BBD5 utilises AC Coupled Triboelectric technology. As particles travel through the process they develop a charge. This charge is transferred as the particle passes or impacts the sensing element. The resulting current is amplified, filtered, rectified and further filtered looking only at the AC component, giving a linear representation of the concentration or mass flow rate of the particles in the gas stream.

The reason for measuring the AC component is that, compared to the DC component, the electronics are more sensitive. The AC signal is substantially less affected by influences such as amplifier noise and process parameters, which includes the build-up of process dust on the sensing rod.

The BBD5 remote sensing head totally filters out any 50Hz or 60Hz frequencies related to mains supply. The amplified signal is then sent via data cable to the control unit for further processing and display.

Operational Range

- Suitable for a wide range of dust collection and stack emissions.
- Applicable for all types of outlet stack geometrical arrangements.

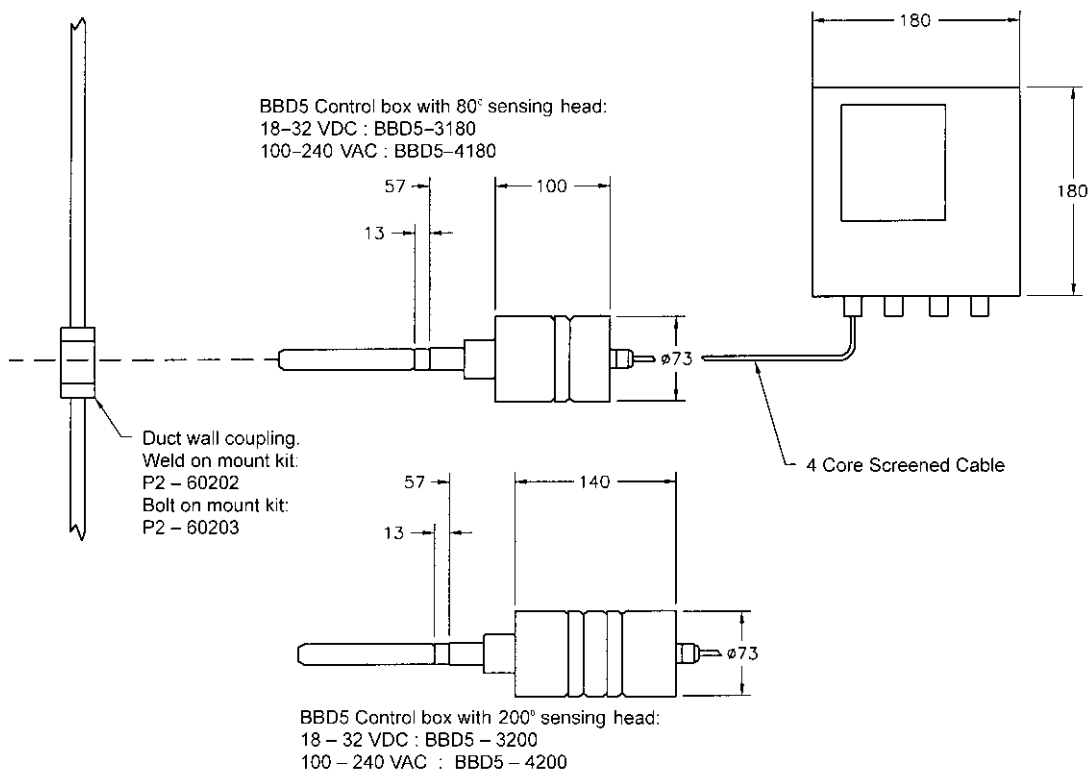
- Insertion temperatures up to 80°C or 200°C (176°F or 392°F), higher if required.
- Applicable to most particulate types.
- For duct sizes from 50mm (2") to outlets over 10m (33ft).
- Dust concentrations from 0.01mg/m³ (4x10⁻⁶gr/ft³).
- Suitable for most stack material eg. steel, brick etc.
- Optional intrinsically safe barrier.

Benefits

- Detects most particles regardless of composition.
- Very sensitive due to AC coupled technology.
- Can monitor extremely small particles eg. galvanising fume (20.1µm).
- Can be used over a wide range of particulate densities.
- Can assist in dramatically reducing plant down time through filter failures.

Features

- Proven AC Triboelectric technology.
- Relay time delay feature.
- Sensitivity adjustment.
- Air purge port.
- Potted construction for reliability and operational stability.
- Simple Installation.
- Alarm level adjustment



Modes of Operation

The BBD5 indicates instantaneous levels of particulate emissions stream. The instrument is usually in an uncalibrated indicative mode in which levels are displayed in a relative scale (0-100%).

The BBD5 also has 2 relay modes – Normal and Failsafe.

Normal

- The alarm relay is de-energised when the BBD5 is powered up.

Failsafe

- The alarm relay is energised when the BBD5 is powered up.
- The alarm relay is de-energised when the BBD5 is in the alarm state.
- Is used so that both power failure and high emissions are alarmed.

Technical Specification

Functions

Bar graph:	Visual indication of emission density
Alarm Time Delay:	0-18 seconds in 2 second steps to prevent false alarms due to pulsing
Sensitivity :	Adjustable sensitivity (10 position switch)

Outputs

Name	Alarm Relay
Specification	8A Resistive 1A Inductive
Function	Emission Alarm

Control Unit

Enclosure Rating:	IP66/Nema 4
Enclosure Size:	180mm wide x 180mm high x 90mm deep (7 ¹ / ₈ " x 7 ¹ / ₈ " x 3 ¹ / ₂ ")
Enclosure Material:	Plastic Composite
Power Supply:	100-240VAC or 18-32VDC
Bargraph Display:	20 step LED
Temperature Range:	-20°C to 60°C (-4°F to 140°F)
Active Head:	One

Sensing Head

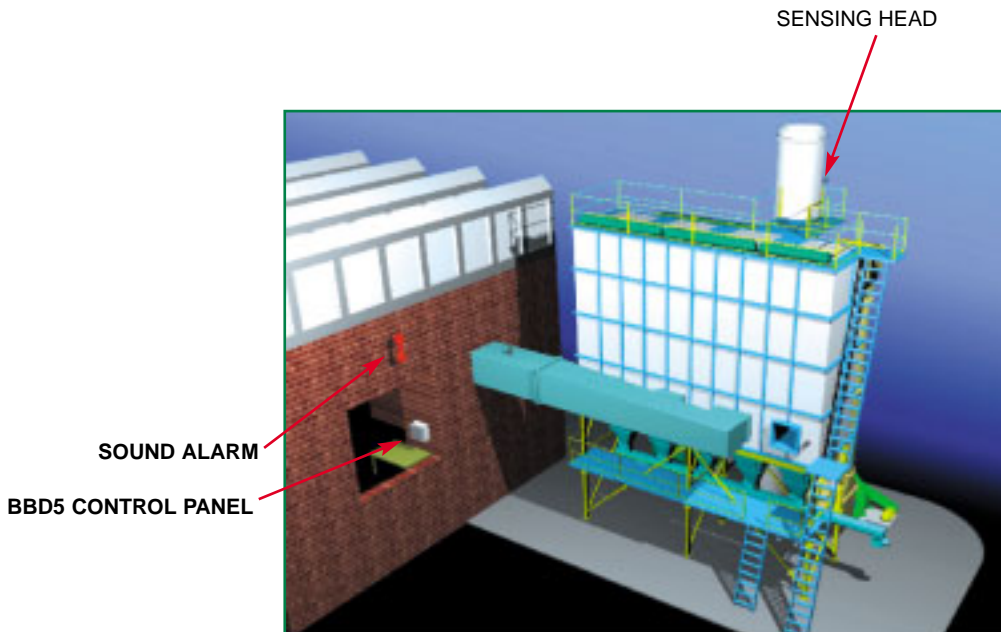
Insertion Temp Range:	P2-45210: -20°C to 80°C (-4°F to 176°F) P2-45220: -20°C to 200°C (-4°F to 392°F)
Connection required on duct:	1" BSPT socket
Enclosure	
Temperature Range:	-20°C to 60°C (-4°F to 140°F)
Enclosure Rating:	IP66/NEMA4
Enclosure Material:	Aluminium
Sensing Element Material:	316 Stainless Steel
Sensing Element Options:	Solid rod, tubular, teflon coated, multiple supports, cable type, different lengths available

Air Purge Requirements:

Connection:	1/8" gas thread on side of unit
Air Pressure:	400kPa (60psi) max
Air Consumption:	1.7 -17m ³ /hr (1-10cfm) pulsed

Electrical Specification between Sensing Head and Control Unit:

4 core screened data cables: Beldon 9534 (or equivalent) max 200m (660ft)





Australia

Goyen Controls Co Pty Ltd
268 Milperra Road
Milperra
NSW 2214

Telephone: 61 2 9792 0201
Facsimile: 61 2 9771 5380

Queensland

Telephone: 61 7 3260 2161
Facsimile: 61 7 3260 2165

South Australia

Telephone: 61 2 9792 0201
Facsimile: 61 2 9771 5380

Victoria

Telephone: 61 3 9874 6655
Facsimile: 61 3 9874 1846

Western Australia

Telephone: 61 8 9302 8800
Facsimile: 61 8 9302 6500

Asia

Goyen Controls Co Pty Ltd
Shanghai Representative Office
2521 Zhao Feng World Trade Building
369 Jiang Su Road Shanghai 200050 CHINA
Telephone: 86 21 5239 8810
Facsimile: 86 21 5239 8812

Goyen Controls Co Pty Ltd
65-2 Jalan Mega Mendung
Kompleks Bandar 58200
Kuala Lumpur MALAYSIA
Telephone: 60 37 987 6839
Facsimile: 60 37 987 7839

USA

Goyen Valve Corporation
1195 Airport Road
Lakewood
New Jersey 08701 USA

Telephone: 1 732 364 7800
Facsimile: 1 732 364 1356

Europe

Goyen Controls Co UK Ltd
Unit 3B Beechwood
Chineham Business Park
Basingstoke, Hampshire, RG24 8WA
UNITED KINGDOM
Telephone: 44 1256 817 800
Facsimile: 44 1256 843 164

Tyco Umwelttechnik GmbH
Im Petersfeld 6
D-65624 Altdiez
GERMANY

Telephone: 49 6432 1001/1002
Facsimile: 49 6432 63810

Mecair S.r.l
Via per Cinisello 97
1-20054 Nova Milanese
Milano
ITALY
Telephone: 39 0362 3751
Facsimile: 39 0362 367 279