

THIS DOCUMENT CONTAINS PROPRIETARY AND CONFIDENTIAL DATA OF EUROVAC INC. NO DISCLOSURE REPRODUCTION, OR USE OF ANY PART THEREOF, MAY BE MADE WITHOUT WRITTEN PERMISSION OF THE COMPANY.

EUROVAC

116 BUTTERMILL AVE., CONCORD, ONTARIO, L4K 3X7

TEL.: 1-800-265-3878

FAX: 905-738-4603

www.eurovac.com

PRODUCT SPECIFICATIONS

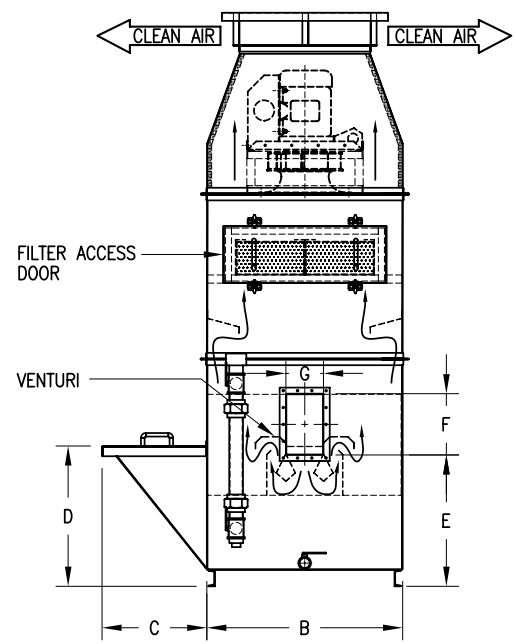
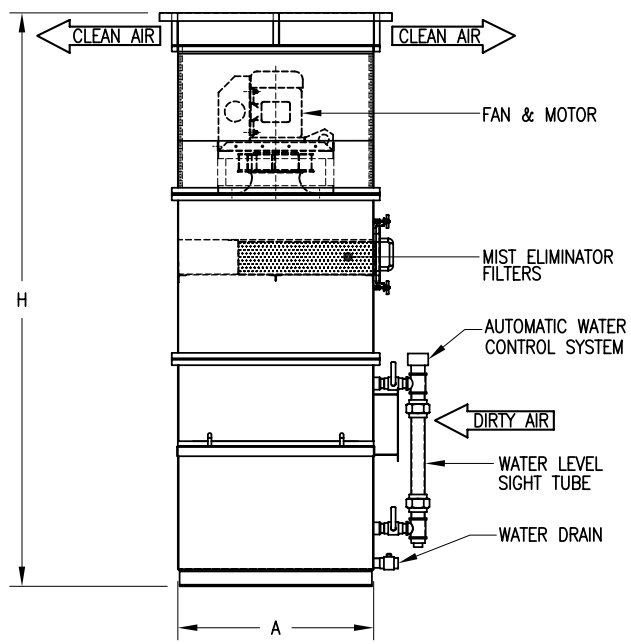
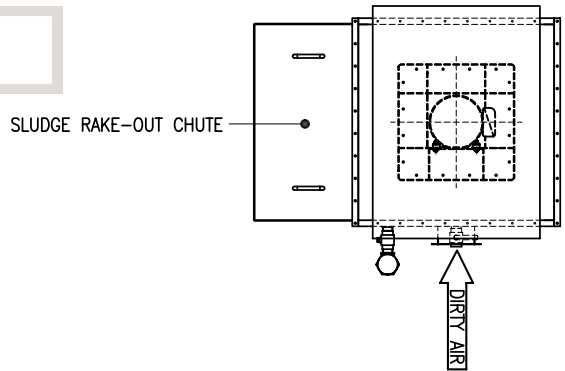
MS TYPE - STYLE A WET DUST COLLECTOR

Distributed By:

Industry Air Sales Ltd.

E-Mail: info@industryairsales.com

2 Automatic Road, Unit 123
Brampton, Ontario, Canada
L6S 6K8
Tel: 905-211-0171 / 905-458-8900
Fax: 905-458-4599
www.industryairsales.com



MODEL	C.F.M. AIR FLOW	EXT. S.P. in W.G.	H.P. MOTOR	A	B	C	D	E	F	G	WEIGHT LBS.
MS-004	400	3 1/2"	1 1/2	1'-3"	1'-3"	1'-0"	1'-10"	1'-9"	4 1/2"	3"	350
MS-005	500	4 1/2"	2	1'-6"	1'-6"	1'-3"	1'-10"	1'-9"	5 3/8"	3"	410
MS-006	600	5"	3	1'-6"	1'-8"	1'-3"	1'-10"	1'-9"	5"	4"	410
MS-007	700	5"	3	2'-0"	2'-0"	1'-3"	1'-10"	1'-9"	5 5/8"	4"	480
MS-008	800	5"	5	2'-0"	2'-0"	1'-3"	1'-10"	1'-9"	6 3/8"	4"	520
MS-090	900	5"	5	2'-0"	2'-0"	1'-3"	1'-10"	1'-9"	7 1/4"	4"	530
MS-010	1,000	5"	5	2'-0"	2'-0"	1'-3"	1'-10"	1'-9"	6 1/2"	5"	540
MS-015	1,500	5"	7 1/2	2'-0"	3'-0"	1'-6"	2'-3"	2'-2"	8"	6"	590
MS-020	2,000	5"	7 1/2	2'-9"	3'-0"	1'-6"	2'-3"	2'-2"	9 1/8"	7"	950
MS-025	2,500	5"	10	3'-0"	3'-6"	1'-9"	2'-3"	2'-2"	10"	8"	1,000
MS-030	3,000	5"	15	3'-6"	3'-6"	1'-9"	2'-3"	2'-2"	10 5/8"	9"	1,030
MS-035	3,500	5"	15	4'-0"	3'-6"	2'-0"	2'-3"	2'-2"	12 1/2"	9"	1,100
MS-040	4,000	5"	20	4'-0"	4'-0"	2'-0"	2'-10"	2'-9"	11 5/8"	11"	1,500
MS-050	5,000	5 1/2"	20	5'-0"	4'-0"	2'-0"	2'-10"	2'-9"	13 3/8"	12"	1,700
MS-060	6,000	5 1/2"	25	6'-0"	4'-0"	2'-0"	2'-10"	2'-9"	16"	12"	1,950
MS-070	7,000	5"	25	7'-0"	4'-0"	2'-0"	2'-10"	2'-9"	18 3/4"	12"	2,800
MS-080	8,000	5"	2x15	8'-0"	4'-0"	2'-0"	2'-10"	2'-9"	18 1/4"	14"	3,100
MS-090	9,000	5 1/2"	2x20	9'-0"	4'-0"	2'-0"	2'-10"	2'-9"	19 1/4"	15"	3,800
MS-100	10,000	5 1/2"	2x20	10'-0"	4'-0"	2'-0"	2'-10"	2'-9"	21"	16"	4,200
MS-110	11,000	5 1/2"	2x25	11'-0"	4'-0"	2'-0"	2'-10"	2'-9"	22"	16"	4,800
MS-120	12,000	5 1/2"	2x25	12'-0"	4'-0"	2'-0"	2'-10"	2'-9"	24"	16"	5,800

NOTE: ALL DIMENSIONS AND WEIGHTS ARE APPROXIMATE

DIMENSIONS AND DESIGN ARE SUBJECT TO CHANGE TO MANUFACTURER'S DISCRETION.